

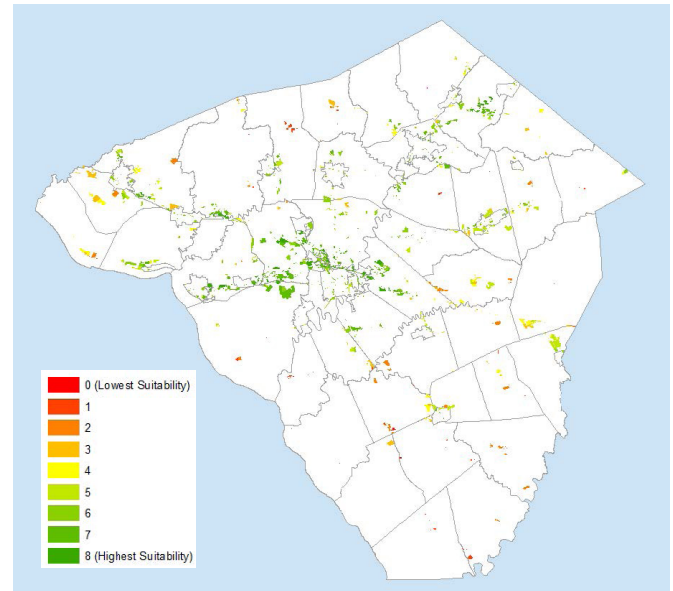
## Real Estate Inventory and Suitability Analysis of Vacant and Underutilized Properties

Sarcinello Planning & GIS Services developed a mapping and data analysis model to carry out this project for the Economic Development Company of Lancaster County (EDC). EDC is a private, non-profit organization leading the effort to promote business expansion and business retention in Lancaster County.

The project had two related components:

1. The Real Estate Inventory analyzed property data to identify vacant and underutilized properties that are zoned for commercial, industrial, institutional, or mixed-use development. It also analyzed real estate listings to determine which of the vacant and underutilized properties were available for sale or lease.
2. The Suitability Analysis of Vacant and Underutilized Properties further analyzed the properties identified in part one of the study to determine their degree of suitability for commercial or industrial development. Suitability was based on a set of eight criteria (i.e., property characteristics that favor commercial or industrial development in Lancaster County) and supplemented by six additional suitability indicators. The analysis resulted in a suitability score for each vacant and underutilized property.

EDC is using maps and data generated by this project as a tool to target economic development initiatives to the most suitable properties and to engage with local government officials. EDC can also sort the data in a variety of ways to access additional information as needed.



Suitability Score	Number of Vacant or Underutilized Parcels	% of Total Parcels	Acres	% of Total Acres
0 (Least Suitable)	10	0.43%	28	0.20%
1	68	2.92%	386	2.75%
2	74	3.18%	1,015	7.23%
3	101	4.34%	1,324	9.43%
4	149	6.41%	1,334	9.51%
5	231	9.93%	2,156	15.37%
6	586	25.19%	2,780	19.81%
7	775	33.32%	3,357	23.92%
8 (Most Suitable)	332	14.27%	1,653	11.78%
<b>Total</b>	<b>2,326</b>	<b>100.00%</b>	<b>14,032</b>	<b>100.00%</b>

