

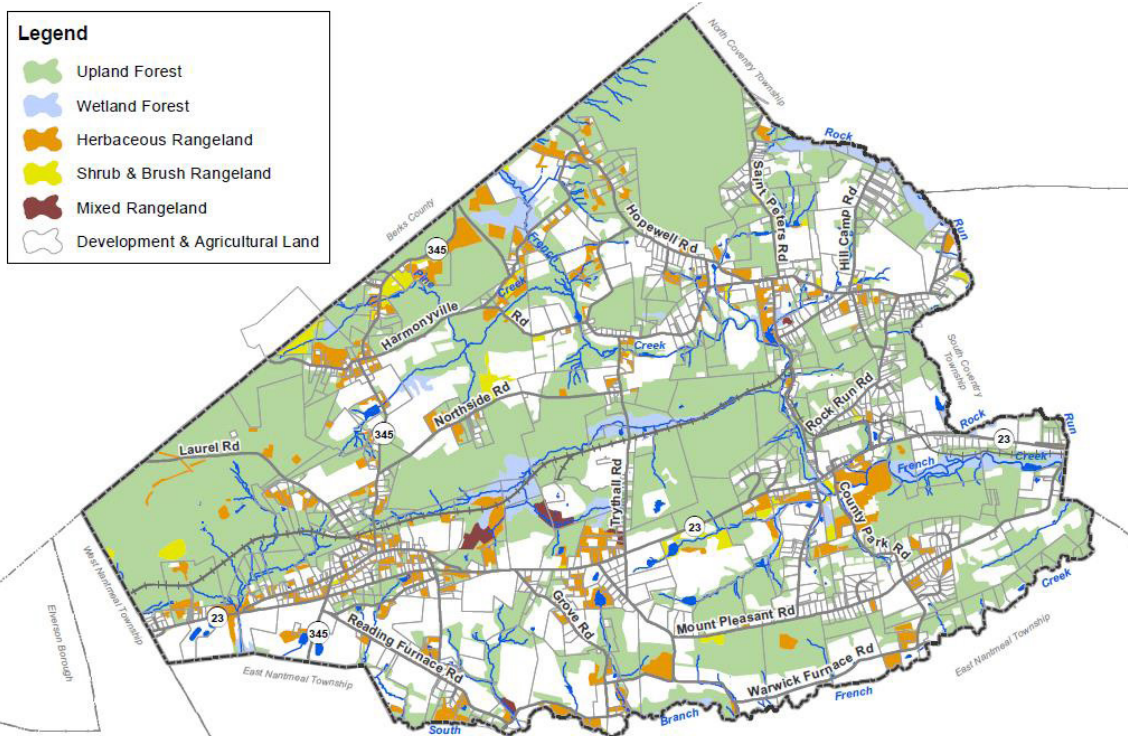
Protection Plan for the Hopewell Big Woods

Sarcinello Planning & GIS Services was part of a team that worked with Warwick Township, Chester County to evaluate protection strategies for the Hopewell Big Woods.

“The Big Woods” covers an expanse of over 110 square miles and is the last large, unbroken forest left in southeastern Pennsylvania. It is an important resource with regional and even global significance, supporting critical habitats, pristine forests, and unique wetlands. It supplies drinking water, provides open space and recreation, and contains many important historic resources.

GIS mapping and analysis was used to evaluate conservation values and identify areas in need of enhanced resource protection measures.

The project resulted in ordinances with increased protections for the Township’s natural resources, ridgelines and scenic views, and historic landscapes.



Collaboration for Positive Action

p: 610-505-9583 e: nanci@sarcinello.com Sarcinello.com